

2

3

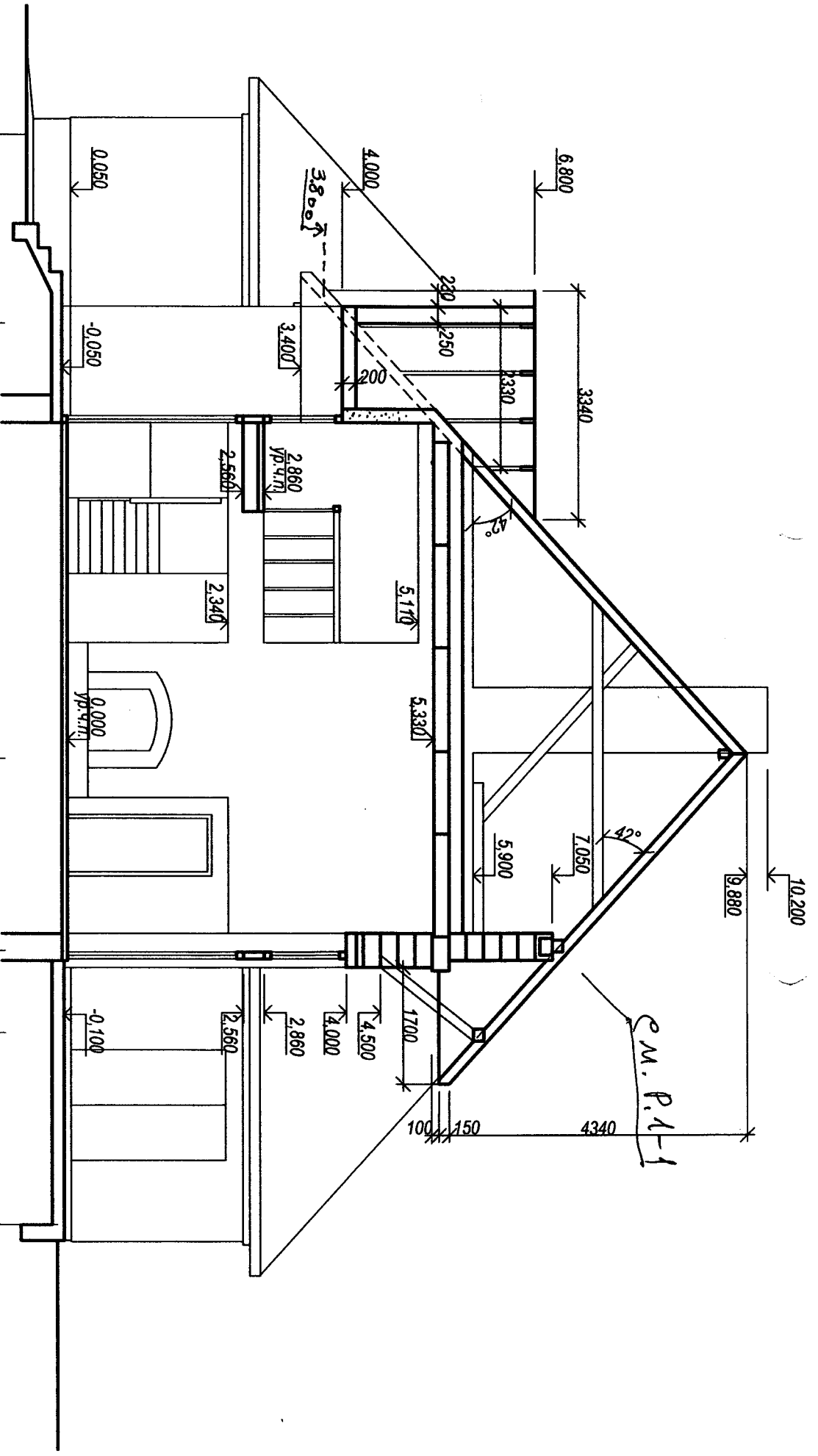
4

5

6

7

2750
6350
15900
9850
2800
1200
2800



0.050

-0.050

-0.100

4.000

3.800

2.860

2.860

4.500

1.700

6.800

3.340

5.110

7.050

9.880

4.340

2.250

3.400

2.560

5.900

2.560

10.200

200

2.340

5.330

5.900

2.560

150

3.330

45°

45°

4.000

3.400

2.340

5.900

2.860

100

6.800

3.340

5.330

7.050

9.880

4.340

2.250

3.400

2.560

5.900

2.560

150

200

2.340

5.330

2.560

100

4.000

3.800

2.860

2.860

4.500

1.700

6.800

3.340

5.110

7.050

9.880

4.340

2.250

3.400

2.560

5.900

2.560

150

200

2.340

5.330

2.560

100

4.000

3.800

2.860

2.860

4.500

1.700

6.800

3.340

5.110

7.050

9.880

4.340

2.250

3.400

2.560

5.900

2.560

150

200

2.340

5.330

2.560

100

4.000

3.800

2.860

2.860

4.500

1.700

6.800

3.340

5.110

7.050

9.880

4.340

2.250

3.400

2.560

5.900

2.560

150

200

2.340

5.330

2.560

100

4.000

3.800

2.860

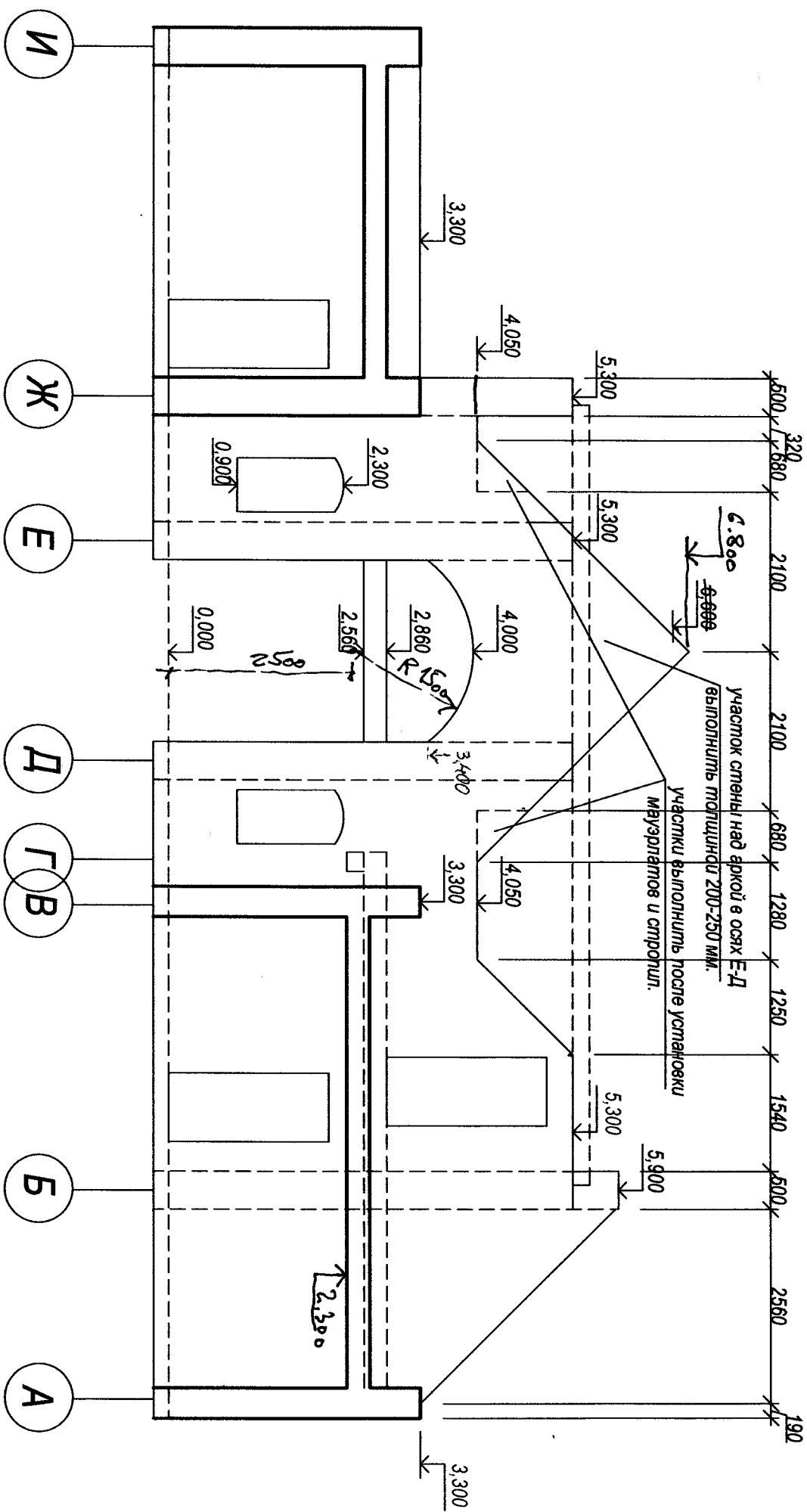
2.860

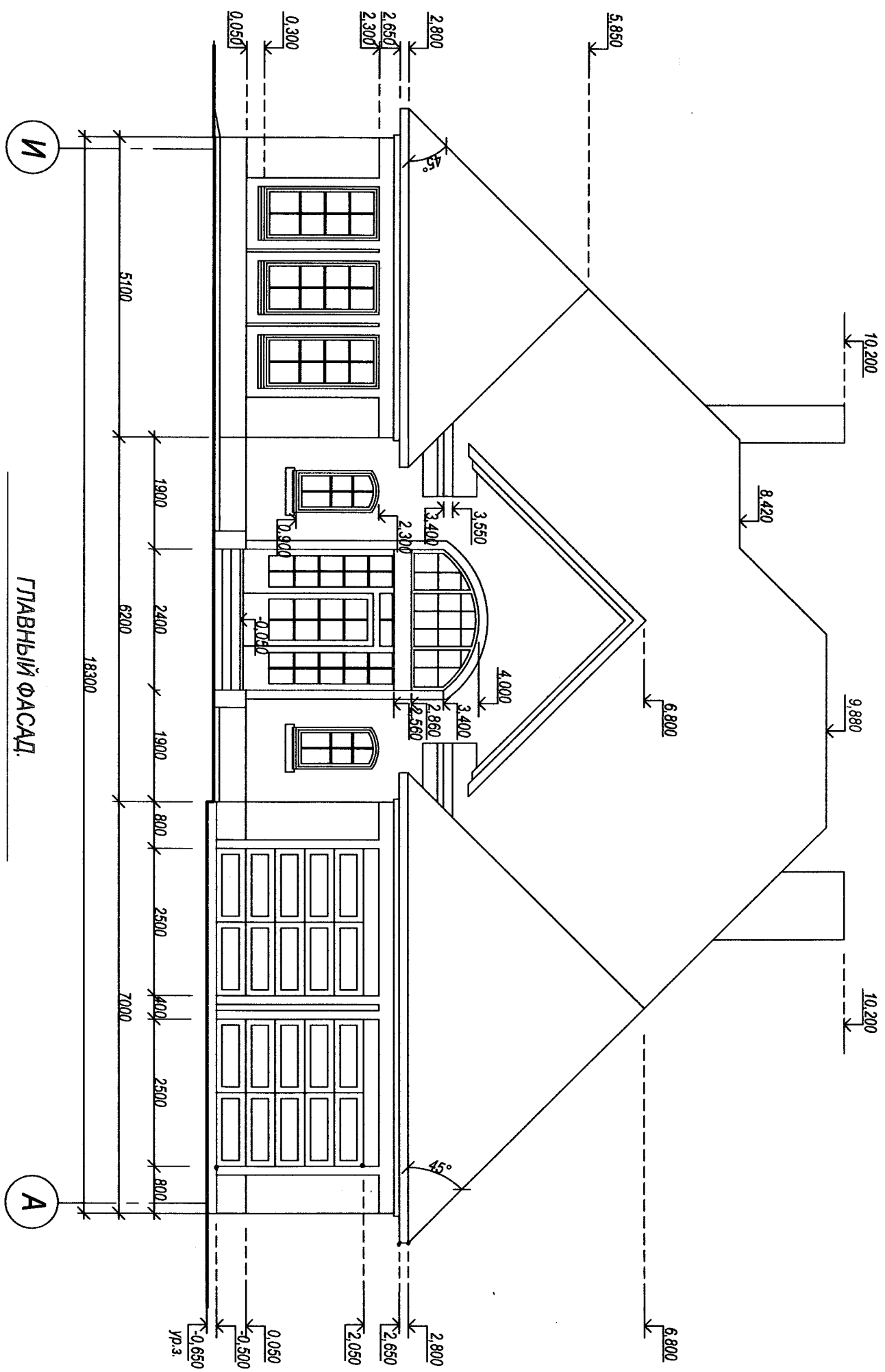
4.500

1.700

e.m. P.1-1

ВИД СТЕНЫ ПО ОСИ З В ОСЯХ И-А.





ПЛАВНЫЙ ФАСАД.